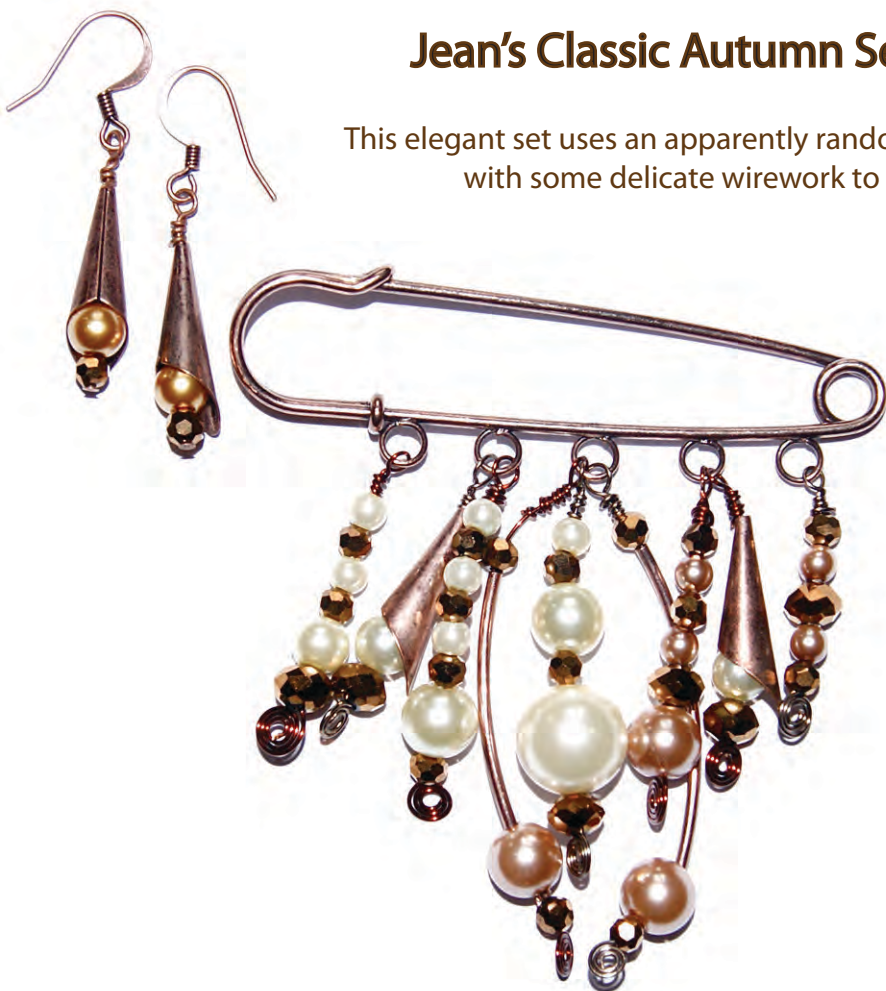


## Jean's Classic Autumn Set

This elegant set uses an apparently random sequence of beads, combined with some delicate wirework to create a beautiful effect.



### Ingredients

4 x MB656 curved copper bead cones  
FN085 copper kilt pin  
Pair of FN006 small fishhook earwires  
2m JW509 0.5mm gunmetal soft wire  
2m JW515 0.5mm mid brown soft wire  
6 x FGR419 bronze rondelle (A)  
18 x CCR419 4mm bronze crystal rounds (B)  
6 x GP402 4mm ivory glass pearls (C)  
3 x GP602 6mm ivory glass pearls (D)  
2 x GP802 8mm ivory glass pearls (E)  
1 x GP1202 12mm ivory glass pearls (F)  
4 x GP412 4mm latte glass pearls (G)  
3 x GP805 8mm latte glass pearls (H)  
2 x GP619 6mm gold glass pearls (J)  
2 x FN648 copper tubes (K)  
2 x FN016 copper headpins

### To Make the Earrings

Onto a headpin thread 1B, 1J, 1 cone. Bring the headpin through the top of the cone, bringing the pearl up tight into the mouth of the cone. Make a wrapped loop at the end of the pin. Attach an earwire.

Repeat to make the other earring.

To make a wire coil end 'headpin'. Grip the end of the wire in a fine round nose plier and make a tiny loop. Now, hold this tiny loop flat in a pair of flat faced pliers and gently wind the wire round two or three times to make the coil, the coil will make the base of a 'headpin' so turn the wire up at a right angle to the coil so that the coil is centred underneath.

### To Make the Brooch

Starting from the end nearest the hinge make up and attach the dangles as follows.

Onto the first loop - cut 30cm gunmetal wire. Make a coil as described above. Onto the wire thread 1B, 1G, 1A, 1G, 1B. Attach the pin to the kilt pin brooch loop by making a wrapped loop at the end.

The second brooch loop has two pins attached to it. For the first make a coil as above in brown wire. Thread on 1A, 1D, a cone, and attach to the brooch loop with a wrapped loop. For the second pin on this brooch loop make another coil in brown wire, thread on 1H, 1A, 1G, 1B, 1G, 1B and attach to the brooch loop with a wrapped loop.

The middle brooch loop has three pins attached to it, make sure when you attach the ones at either side that the arcs of the tubes face outwards. For the first pin make a coil in gunmetal wire. Above this thread on 1B, 1H, 1K, 1B. Attach to the brooch loop with a wrapped loop. For the middle pin make a coil in gunmetal wire, thread on 1A, 1F, 1B, 1E, 1B, 1C and attach to the brooch loop with a wrapped loop. For the third pin on this central brooch loop make in exactly the same way as the first BUT use brown wire instead of gunmetal.

The fourth brooch loop has two pins attached to it to mirror the pins on the second loop but with slightly different bead combinations. For the first pin make a coil in brown wire. Then thread on 1B, 1E, 1B, 1C, 1B, 1C, 1B, 1C, and attach to the brooch loop with a wrapped loop. For the second pin make a coil with gunmetal wire then thread on 1A, 1D, a cone and attach to the brooch loop with a wrapped loop.

The last brooch loop has just one pin on it. Make a coil in brown wire. Then thread on 1A, 1D, 1B, 1C, 1B, 1C, and attach to the final brooch loop with a wrapped loop.

Finally make sure that all of your wire ends are tucked in neatly and finished off cleanly.