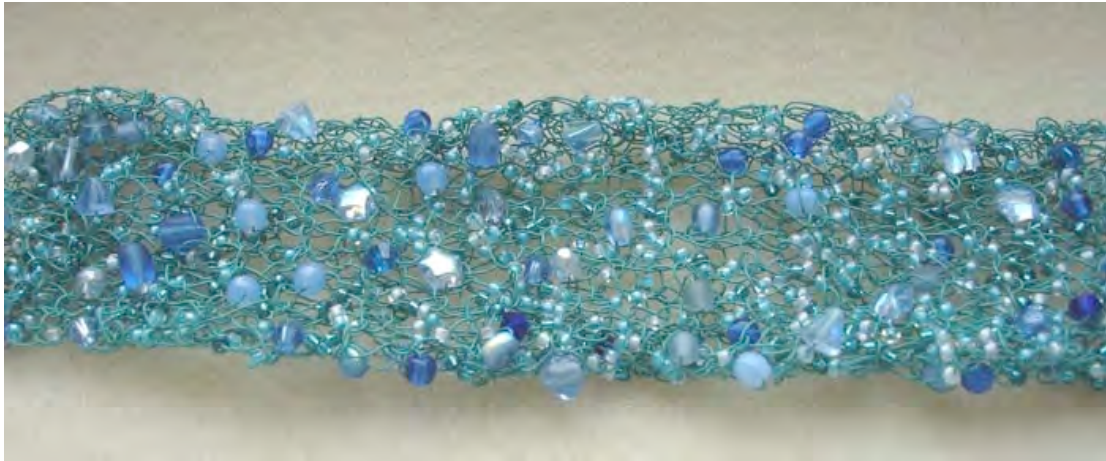


Broad Cuff Bracelet with pre-threaded beads



You will need a reel of 0.315 wire; two press-studs and a random selection of small beads – this is an ideal project for using up oddments from your bead box, or choose bead selection SEL001/50 in the appropriate colour which can be found under ‘[Project Packs](#)’ and we will put together a mix for you.

Before you start

When you pre-thread beads and bring them up to the pins as you need them, you need to have a clear idea of the density and distribution before you begin your work. Try making a tension square or strip to test out the positioning of the beads. Do not limit yourself to one bead at a time - bring up seed beads in clusters and make a small twist in the wire to hold them where you want them or make a longer twist to give you stamens emerging from the main body of the knit.

Basically what you do is thread beads onto the wire while it is on the bobbin and pull the wire through the beads as you knit, pulling the beads up into the design as you go, on alternate rows only so that they all sit on the same side of the work – and it is just knitting – no purl.

To Start:

Pre-thread approximately 1m of the wire with the beads – choose the order they go in if you wish but Pat likes to put them all together in a dish and thread them at random for a more textured effect.

With 4mm (No 8) metal knitting needles pull the wire through the beads and cast on 11 stitches,
Knit only (no purl) for 2cm

Next row (Row A) start bringing the beads up and incorporate them into the knitting, except on the 1st and last stitch of the row.

Next row (Row B) knit only, do not bring any beads up. Repeat rows A and B until the beaded length is long enough for your wrist, with the plain 2cm from the beginning as overlap – this is where you will stitch on the press stud fastening to finish the bracelet later.

Cast off two stitches at either side

Knit a length without beads to match the beaded length.

Cast off.

Cut the wire about 1m from the end of the knitting.

Fold the knitting to make a double layer. Now fold over the edges of the beaded half onto the plain back – this brings the beads to the edge of the knitting giving a nice effect. Use the 1m end of the wire to stitch the two layers together - make random stitches 4 - 6mm long.

Add more beads now if you wish. If you run out of wire add a new piece - just tuck the end into an adjacent bead and off you go.

To finish:

Attach press studs to fasten the cuff – we recommend two standard size press-studs for this width. Make sure that you bind the two ends of the knitting together well at the fastening and oversee the cast on and off rows together so they cannot catch on anything.