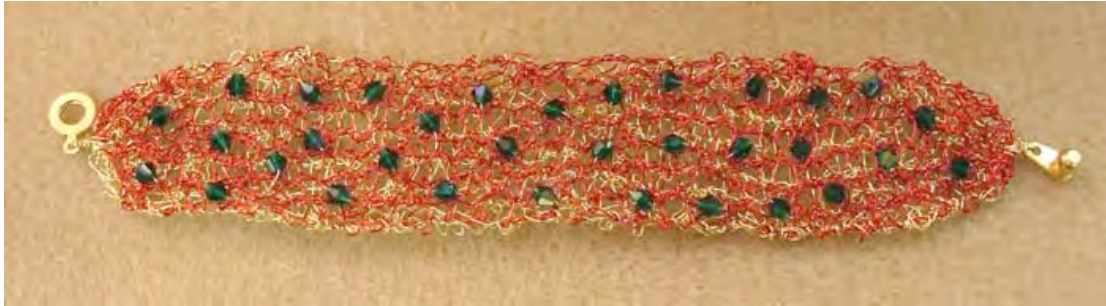


## Tapered Bracelet.

This is a really quick and easy knitted bracelet that can be as soft and subtle or bold and glitzy as you like. There is a fantastic range of 0.315mm wire colours to choose from and highlighting with a few cut crystal beads just gives it a bit of extra sparkle.

The wire we have used is listed under [Wire – Coloured Wire – 0.315mm Wire](#), the crystal is from a selection in [Cut Crystal](#).



For the pictured bracelet Lynn has used two colours of 0.315 wire, red and champagne, 22 cut 4mm crystal bicones and a ball and socket clasp.

### To Start:

Using 3.25mm needles cast on 7 stitches with your first wire colour.

Knit (no purl) to the desired length, less the length of the chosen fastener.

Change to the second wire colour and continue to knit until you have double this length.

Cast off leaving approx 1m of wire.

Fold the length in half and with your fingers shape the ends to either a broad point or, as on the picture, to a curved edge.

Use the attached wire to oversee the edges to secure the layers of the bracelet and the shaped ends.

With a new piece of wire sew your beads onto the bracelet.

### To attach the clasp:

Take a double piece of wire through the loop of the fastener and form a small shank. Bind well with the wire and sew into the body of the bracelet.

This bracelet has a light and delicate appearance and this can also be achieved by using the same basic shape but using:-

semi-precious chips or 4mm faceted glass beads to decorate;

just a single colour wire for the knitting and then using a contrast thread for all the non-knitting parts;

toggle fasteners also work beautifully on this design.